

The Jesse Tree



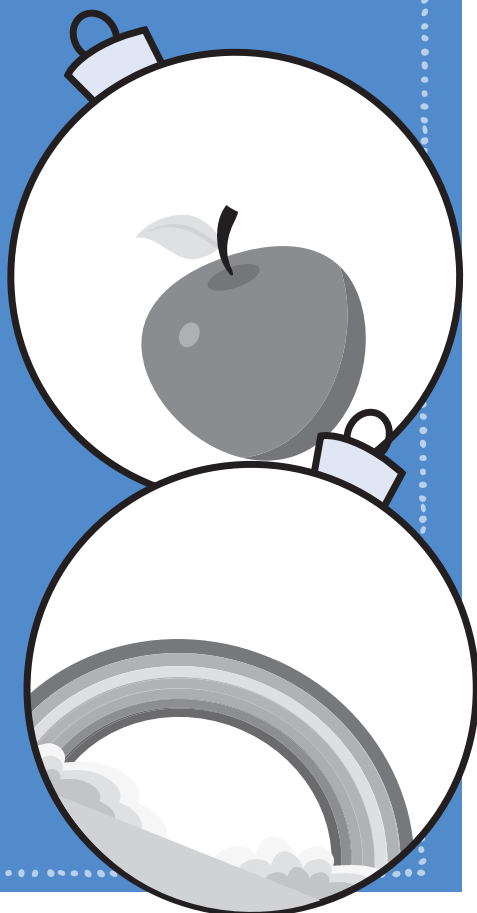
Jesus' family tree is called the Jesse Tree. Jesse was the father of King David, a powerful and beloved king of Israel. The prophet Isaiah wrote, "A shoot shall come out from the stump of Jesse, and a branch shall grow out of his roots" (Isaiah 11:1). That "shoot" would be Jesus.

For many of Jesus' ancestors there is a symbol representing that person's life story. All of their stories put together tell our Christian family story, which is a story that shows how God was and is always with us. Throughout Advent we will be talking about Jesus' ancestors and matching them with their symbols on the Jesse Tree ornaments.

After reading the brief descriptions of these ancestors of Jesus, write the correct name or names on the appropriate ornament. To learn more about each ancestor, read the cited Scripture verses.

God made **ADAM AND EVE**, who lived freely and happily until they disobeyed God. Then they were banished from the Garden of Eden. (GENESIS 2:7-9, 18-24; 3:1-7, 22-24)

To punish people for turning toward evil, God destroyed all living things in a great flood, except for **NOAH**, his family, and a male and female of each animal. All people and animals were sheltered in a great ark. (GENESIS 6:5-8, 13-22; 7:12-17, 23, 24; 8:1, 6-22)





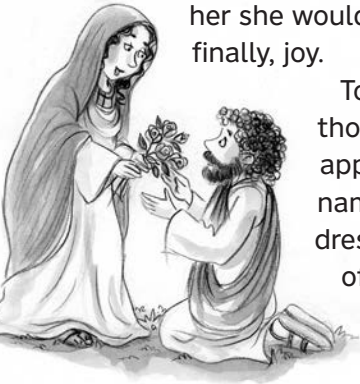
Second Tuesday of Advent

DECEMBER 12 ★ OUR LADY OF GUADALUPE

★ Today's Gospel » Luke 1:26-38 ★

The angel Gabriel was sent by God to a town in Galilee called Nazareth, to a virgin engaged to a man named Joseph. The virgin's name was Mary (1:26-27).

The beginning of Luke's Gospel is the first we hear about Mary. Imagine the feelings she must have had when an angel appeared and told her she would be the mother of Jesus: fear, awe, confusion, and finally, joy.



Today's feast celebrates one of the times Mary caused those same feelings in other people with her own appearance to them. In 1531, she appeared to a man named Juan Diego on a hill near Mexico City. She was dressed as an Aztec princess. Juan Diego also felt a mix of many emotions.

Mary has appeared to many people through the centuries. Who knows to whom she will appear next? It could be you. You think that's impossible?

Using a checkerboard pattern, highlight every other square in this puzzle.

Then write the highlighted letters on the lines below, followed by the letters that are not highlighted. You'll find out why you could be the next person Mary visits!

N	P	O	O	T	S
S	H	I	I	B	N
G	L	W	E	I	W
I	L	T	L	H	B
E	G	I	O	M	D

The Jesse Tree



After reading the brief descriptions of these ancestors of Jesus, write the correct name on the appropriate ornament. To learn more about each ancestor, read the cited Scripture verses.

SAMUEL, having been dedicated to the Lord by his mother at a young age, grew up in the temple at Shiloh. He became a trustworthy prophet and a light of God to the Israelites. (1 SAMUEL 3:19)

The greatest of Jesse's sons was **KING DAVID**, who as a young boy killed the Philistine Goliath. A six-pointed star is the emblem of the Royal House of David. Christ was born of the House of David. (1 SAMUEL 17:12-51)

SOLOMON, the heir to the throne of his father, King David, asked God for the gift of wisdom so he could rule with justice, and God granted it to him. Solomon needed this wisdom when confronted by two women, both claiming to be the mother of the same baby. Solomon built the great Temple of Jerusalem. (1 KINGS 3:5-28; 6:1, 38)

ELIJAH challenged the priests of the false god Baal to start a fire to sacrifice a bull just by calling on their god. When the priests could not get the fire started by invoking Baal's name, Elijah built an altar and called out to the Lord God. The fire started and consumed the bull and the altar. (1 KINGS 18:17-39)

ISAIAH was a great prophet who had a vision of the Lord sitting on a throne being attended to by angels. One of the angels flew to Isaiah and purified him by touching his lips with a live coal held by a pair of tongs. (ISAIAH 6:1-13)





Third Thursday of Advent

DECEMBER 21



SAINT PETER CANISIUS

★ Today's Gospel » Luke 1:39-45 ★

Elizabeth exclaimed to Mary, "Blessed is she who believed...what was spoken to her by the Lord" (1:45).

This squashed-together puzzle has answers going Across, Down, Up, and Around the Corner. Every answer is three letters long except for 2 Across and one that is a single letter. **Read carefully. If you see an arrow, follow it!**

1		2	3		
				4	
	5				
		6			
7	8		9		

ACROSS

- 2 Opposite of more
- 6 Abbreviation for the first school day of the week
- 9 Opposite of women →
- 9 Cut the grass ←

DOWN

- 1 Stinging, buzzing bug
- 4 If in a hurry, don't walk, ___!

UP

- 8 Jesus is the ____, the truth, and the life.
- 9 Cow talk

SINGLE

- 7 Seventh letter of alphabet

AROUND THE CORNER

- 1 Piece of furniture for sleeping ↪
- 3 A hole in your head for hearing ↪
- 5 Some call it a sweet potato ↪

After completing the puzzle, read from left to right. Write the message on these lines. You will discover something else Elizabeth said to Mary.



Fourth Sunday of Advent

DECEMBER 24



★ Today's Gospel » Luke 1:26-38 ★

The angel said to her, "Do not be afraid, Mary, for you have found favor with God. And now, you will conceive in your womb and bear a son, and you will name him Jesus" (1:30-31).

DECODE THIS PUZZLE

to find out what else the angel said about Mary's baby. First, check the *Number Value* to find the letter that number represents. Then check the *Letter Key* to find which letter that letter represents. Finally, write the correct letter in the box below each number in the puzzle.

Number Value

A=1	N=14
B=2	O=15
C=3	P=16
D=4	Q=17
E=5	R=18
F=6	S=19
G=7	T=20
H=8	U=21
I=9	V=22
J=10	W=23
K=11	X=24
L=12	Y=25
M=13	Z=26

Letter Key

A=Z
B=Y
C=X
D=W
E=V
F=U
G=T
H=S
I=R
J=Q
K=P
L=O
M=N

Here's the first one

19=S and S=H, so the first letter is H.

19	22	4	18	15	15	25	22	24	26	15	15	22	23	7	19	22
H																

8	12	13	12	21	7	19	22	14	12	8	7	19	18	20	19